

# Specialist Automation

Immunoassay  
Biochemistry  
Coagulation

**ids**  
immundiagnosticsystems



**ids** *isys*

## Contents

---

Specialist immunoassay	02
Flexibility	03
Specifications	05
Specialist assay menu	09
Service and support	11
Contact us	13





## Specialist immunoassay

As research uncovers new clinical applications, specialist manual assays are reaching the volumes that require automation. This increased demand can sometimes be to the detriment of performance in terms of precision, sensitivity and clinical application. The solution...

...is a system from a company with a proven track record of producing award winning immunoassay technology and who now are bringing these qualities and skills to automation. The key focus is to achieve "higher" throughput without compromising assay quality.

This system is for your esoteric analytes that are increasing in numbers but where no single alternative meets the needs of the laboratory in terms of throughput, reliability and performance.

Our key fundamental objective is to bring these specialist assays to you on a platform that offers a clear advantage to the user in terms of availability, performance, quality and throughput.



Test Name	Value
GLUCOSE	88
UREA	8
CREATININE	0.7
EF (NON-AFRICAN AMER.)	>60
EF (AFRICAN AMER.)	>60
SODIUM	142
POTASSIUM	3.7
CHLORIDE	98
BICARBONATE	29
CALCIUM	9.4
BILIRUBIN, TOT	0.9
TOTAL PROTEIN	7.1
ALBUMIN	4.1
AST (SGOT)	13
ALT (SGPT)	16
ALKALINE PHOS	41
DIFF. BLOOD	

## Flexibility in mind – Combining technologies

Laboratories are facing increasing pressure to maintain clinical performance and workflow whilst always improving operational and cost outcomes. IDS understands these constraints and has designed a system to optimise workflow by testing for a complete clinical profile without the need to split samples.

As well as specialist immunoassay technology, the IDS-iSYS also features:

### **Biochemistry**

Demand for Biochemistry has created numerous different systems to meet every size of laboratory. The IDS-iSYS also features this technology not to compete with high throughput Biochemistry analysers, but to simply offer you the flexibility to run your commonly requested clinical chemistry analytes at the same time as your specialist endocrine samples.

### **Coagulation**

Coagulation continues to advance into a multi-discipline branch of diagnostics. Diseases and conditions have now crossed departmental boundaries, with all laboratory disciplines being involved to produce an accurate diagnosis. The IDS-iSYS has been developed to accommodate panels of specialist coagulation tests utilising the latest system technologies and techniques to advance assay quality and performance. These assays will run alongside the Immunology and Biochemistry product ranges, to help establish a full clinical assessment.

# Specifications

Whether your requirement is to automate a single parameter increasing in volume or combining all your specialist testing onto one system, the IDS-iSYS is designed for your workload and needs.

The system has everything you command from a clinical analyser in a small, bench-top design integrating 3 proven technologies to accommodate all your specialist analyte requirements.

High-performance assays require a high performance platform, the IDS-iSYS delivers both to your laboratory.

## Software

### Intuitive and secure

- Full traceability of samples and reagents
- Remote maintenance connection
- Online update (technical information and software) available
- QC and consumable management

## Easy to Use

### Continuous loading with positive ID

- Refrigerated reagents
- Up to 15 different immunoassays
- Up to 90 biochemistry reagents
- Up to 6 coagulation tests
- 64 positions for samples, controls or calibrators
- STAT function
- 2-point calibration
- On-board dilution
- Random access or batch mode

## Walk Away Capability

- 960 cuvettes on board
- Automatic cuvette loader
- Ancillary reagents on board



## Single Cuvette Test

- Automatic loading of the cuvettes
- One cuvette per test offering no cross contamination, and simple traceability
- Incubation (at 37°C) and transportation via carousel (90 positions)

## Asynchronous Management

- Each cuvette processed independently
- Modular configuration optimises throughput and allows continuous access

## Modular Reaction Carousel

Specific measurement module for each discipline

- Immunology:
  - Luminometer
- Biochemistry:
  - Spectrophotometer
- Coagulation:
  - Chronometry module

## A Unique Analytical Platform

- Performs a complete analytical panel by running immunology, biochemistry and coagulation at the same time
- Manages workload for optimal throughput

## Performance

Maximum Throughput\*

- Immunology  
60 - 120 tests/hour
- Biochemistry + ISE  
360 tests/hour
- Coagulation  
60 - 120 tests/hour

\*Assay dependent



# Specifications

## System

---

Multi-discipline Immunology, Biochemistry and Coagulation analyser

- Immunology and Biochemistry (4 washers)
- Immunology and Biochemistry + (2 washers) + Coagulation (2 chronometric modules)
- Biochemistry + Coagulation (2 or 4 chronometric modules)

## Maximum throughput

---

According to configuration

- Immunology  
60 - 120 tests/hour
- Biochemistry  
360 tests/hour
- Coagulation  
60 - 120 tests/hour

## Samples

---

Serum or urine

Primary tubes 5mL (13x75 mm), 7mL (13x100 mm), 10mL (16x100 mm)

Secondary tubes (13 x 75 mm)

Paediatric tubes

500 $\mu$ L and 1.5mL cups

64 positions for samples, calibrators and controls

Liquid level detection by capacitance

Clot detection

On-board dilution and pre-treatment

## Barcode readers/types

---

Barcode reader for reagents and ancillaries

Barcode reader for samples

Barcode types: Codes: 2/5, EAN/UPC, Code 39, Code 128 and Codabar

## Reagent compartment

---

15 rails which can hold:

Up to 15 different immunoassays

Up to 90 biochemistry reagents

Up to 6 coagulation tests

STAT function

Storage at 12-15°C while operating

Internal onboard storage between 8 and 10 °C in standby mode

## Sample volume ( $\mu$ L)

---

Immunology: 5 to 150 $\mu$ L

Biochemistry: 4 to 50 $\mu$ L

Coagulation: 5 to 150 $\mu$ L

## Sampling system

---

Single pipetting arm for sample/reagents

Probe cleaning between samples/reagent pipetting

## Spectrophotometer

---

Spectrophotometer with interferential filters

6 wavelengths available: 340, 405, 500, 540, 580 and 620 nm

Halogen lamp. Transmission by optic fibre

Linearity: Up to 3 OD

Optic path of cuvettes: 0.7 cm



### **Luminometer**

---

Wavelengths: from 300 to 500 nm  
Linearity: Up to 10 Million Rlu

### **Chromometer**

---

Optic detection of clot  
Bichromatism

### **Selective electrodes module (ISE)**

---

Determination of Sodium, Potassium, Chloride  
Direct potentiometry on serum  
Indirect potentiometry on urine

### **Carousel**

---

Incubation at 37°C  
90 positions for disposable cuvettes  
Automatic cuvette loading

### **Cuvette loader**

---

Heated cuvette loader.

### **Waste collection**

---

10 litre container holding liquid waste posing a biological risk  
Solid waste (cuvettes) disposed of in disposable container

### **Power supply**

---

Voltage: 110 - 220 V  
Frequency: 50 - 60 Hertz  
Maximum power consumed: 1000 VA

### **Dimensions**

---

Analyser: L 105 x H 70 X W 75 cm  
Weight: 75 kg  
Computer: L 60 x H 40 X W 50 cm

### **Informatics**

---

Connection to centralised computer:  
bidirectional connection (ASTM protocol)

### **Computer system – minimum configuration required**

---

**Operating system:**  
WINDOWS XP Pro Service Pack 2

**Microprocessor:**  
AMD™ Sempron 3100 or equivalent

**Live memory:** 1Gb

**Hard disk:** 80 Gb

**Ethernet:** 2 independent Ethernet  
network adaptors

**Ports:** 2 USB ports  
Serial port for connection to LIS

**Keyboard:** AZERTY or QWERTY Mouse

**Screen:** 17 inch monitor  
Screen resolution 1024 x 768 pixels

**Peripherals Reader:** CD burner



# Specialist assay menu

High quality, clinically validated assays are key to improving healthcare efficiency and patient care. IDS are collaborating with opinion leaders world-wide to expand the menu currently in development, with next generation, highly specific disease markers.

## Immunology

### Calcitropic Hormones

25-Hydroxy Vitamin D  
Intact PTH  
Bioactive PTH (1-84)  
1,25-Dihydroxy Vitamin D

### Bone Turnover

BAP  
CTX-I (CrossLaps®)  
N-MID™ Osteocalcin  
TRACP 5b

### Growth Disorders

hGH  
IGF-I  
IGF-BP3

### Hypertension

Renin  
Aldosterone

### Adrenal/Pituitary

ACTH  
Cortisol

### Diabetes

C-peptide  
Insulin

## Biochemistry

Albumin  
ALP  
APO A1-APO B  
Amylase  
Bilirubin Total/Direct  
Calcium OCP  
Chloride (ISE)  
Cholesterol  
Cholesterol HDL Direct  
CK  
Creatinine  
CRP Latex  
Gamma-GT  
Glucose  
GOT/ASAT  
GPT/ALAT  
Iron  
LDH  
Magnesium  
Phosphorus  
Potassium (ISE)  
Protein Total & Urine  
Sodium (ISE)  
Triglycerides  
Urea  
Uric Acid

## Coagulation

PT, INR  
aPTT  
Fibrinogen  
TT  
Factors  
D-Dimer  
HIT (heparin induced thrombopenia)  
AT III  
Heparins

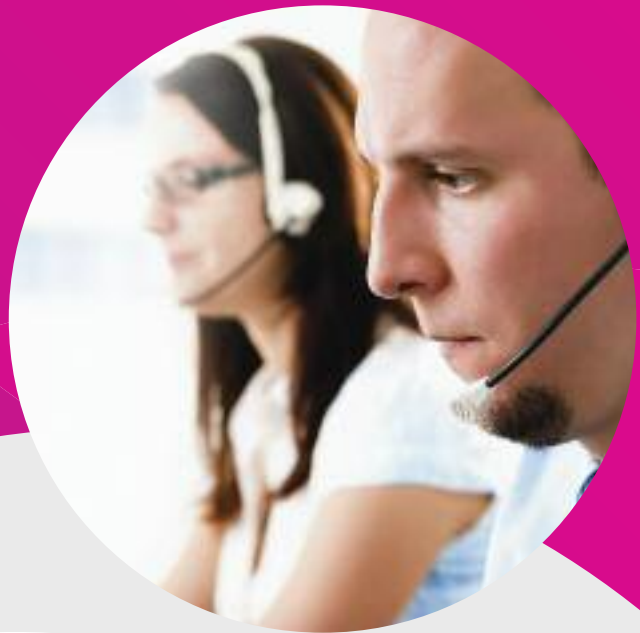


# Service and support

Service and support is as important to a laboratory as the results they deliver.

IDS understands this and has a service infrastructure in place to deliver peace of mind to your lab. With a help-line and next day on-site assistance, IDS is always on-hand to support you every step of the way.





## Technical Support

The specialists in our technical support department are available to advise and support you if you have any questions concerning the application and functionality of the system. These services include:

- A personal contact to assist you through the technical support process
- Fast and competent assistance to your questions
- Frontline telephone support for all hardware/software configuration queries
- Remote dial-in to rapidly assist in system diagnostics
- Application training

## Field Service

With a global network of field engineers, there is always someone on hand to visit and assist you in your laboratory. With customised service contracts to suit every clients needs, you can be sure of:

- Next day, on-site assistance
- Support and on-site advice for optimal use of the system
- Preventative maintenance to ensure the on-going reporting of results



Contact your local IDS office for further details on this unique laboratory solution or contact IDS UK to be put in touch with your local distributor.

**United Kingdom**

**Immunodiagnostic Systems Limited (IDS Ltd)**  
10 Didcot Way, Boldon Business Park,  
Boldon, Tyne & Wear, NE35 9PD, UK  
Tel: +44 (0) 191 519 0660  
Fax: +44 (0) 191 519 0760  
Email: [info.uk@idsplc.com](mailto:info.uk@idsplc.com)  
[www.idsplc.com](http://www.idsplc.com)

**Germany**

**Immunodiagnostic Systems GmbH (IDS GmbH)**  
Mainzer Landstrasse 49, 60329,  
Frankfurt am Main, Germany  
Tel: +49 (0) 69 3085 5025  
Fax: +49 (0) 69 3085 5125  
Email: [info.de@idsplc.com](mailto:info.de@idsplc.com)  
[www.idsplc.com](http://www.idsplc.com)

**United States of America**

**Immunodiagnostic Systems Inc (IDS Inc)**  
P.O. Box 17063  
Fountain Hills, AZ 85269-7063 USA  
Tel: 480 836 7435  
Fax: 480 836 7437  
Email: [info.us@idsplc.com](mailto:info.us@idsplc.com)  
[www.idsplc.com](http://www.idsplc.com)

**France (Specialist Immunoassay)**

**Immunodiagnostic Systems EURL (IDS EURL)**  
55 Rue Sainte Anne, 75002 PARIS, France  
Tél: +33 (0)1 42 44 12 63  
Fax: +33 (0)1 42 44 40 76  
Email: [info.fr@idsplc.com](mailto:info.fr@idsplc.com)  
[www.idsplc.com](http://www.idsplc.com)

**France (Biochemistry and Coagulation)**

**Immunodiagnostic Systems (IDS)**  
4, Rue Galvani, 91745 MASSY Cedex, France  
Tél: +33 (0)1 64 53 15 15  
Fax: +33 (0)1 64 53 15 20  
Email: [info.massy@idsplc.com](mailto:info.massy@idsplc.com)  
[www.idsplc.com](http://www.idsplc.com)

**Scandinavia**

**Immunodiagnostic Systems Nordic a/s (IDS Nordic a/s)**  
Marielundvej 30, 2. Sal,  
2730 Herlev, Denmark  
Tel: +45 44 84 0091  
Fax: +45 44 84 0092  
Email: [info.nordic@idsplc.com](mailto:info.nordic@idsplc.com)  
[www.idsplc.com](http://www.idsplc.com)





# www.idsplc.com

## **United Kingdom**

### **Immunodiagnostic Systems Limited (IDS Ltd)**

10 Didcot Way, Boldon Business Park,  
Boldon, Tyne & Wear, NE35 9PD, UK  
Tel: +44 (0) 191 519 0660  
Fax: +44 (0) 191 519 0760  
Email: [info.uk@idsplc.com](mailto:info.uk@idsplc.com)  
[www.idsplc.com](http://www.idsplc.com)

## **Germany**

### **Immunodiagnostic Systems GmbH (IDS GmbH)**

Mainzer Landstrasse 49, 60329,  
Frankfurt am Main, Germany  
Tel: +49 (0) 69 3085 5025  
Fax: +49 (0) 69 3085 5125  
Email: [info.de@idsplc.com](mailto:info.de@idsplc.com)  
[www.idsplc.com](http://www.idsplc.com)

## **United States of America**

### **Immunodiagnostic Systems Inc (IDS Inc)**

P.O. Box 17063  
Fountain Hills, AZ 85269-7063, USA  
Tel: 480 836 7435  
Fax: 480 836 7437  
Email: [info.us@idsplc.com](mailto:info.us@idsplc.com)  
[www.idsplc.com](http://www.idsplc.com)

## **France (Specialist Immunoassay)**

### **Immunodiagnostic Systems EURL (IDS EURL)**

55 Rue Sainte Anne, 75002 PARIS, France  
Tél: +33 (0)1 42 44 12 63  
Fax: +33 (0)1 42 44 40 76  
Email: [info.fr@idsplc.com](mailto:info.fr@idsplc.com)  
[www.idsplc.com](http://www.idsplc.com)

## **France (Biochemistry and Coagulation)**

### **Immunodiagnostic Systems (IDS)**

4, Rue Galvani, 91745 MASSY Cedex, France  
Tél: +33 (0)1 64 53 15 15  
Fax: +33 (0)1 64 53 15 20  
Email: [info.massy@idsplc.com](mailto:info.massy@idsplc.com)  
[www.idsplc.com](http://www.idsplc.com)

## **Scandinavia**

### **Immunodiagnostic Systems Nordic a/s (IDS Nordic a/s)**

Marielundvej 30, 2. Sal,  
2730 Herlev, Denmark  
Tel: +45 44 84 0091  
Fax: +45 44 84 0092  
Email: [info.nordic@idsplc.com](mailto:info.nordic@idsplc.com)  
[www.idsplc.com](http://www.idsplc.com)